



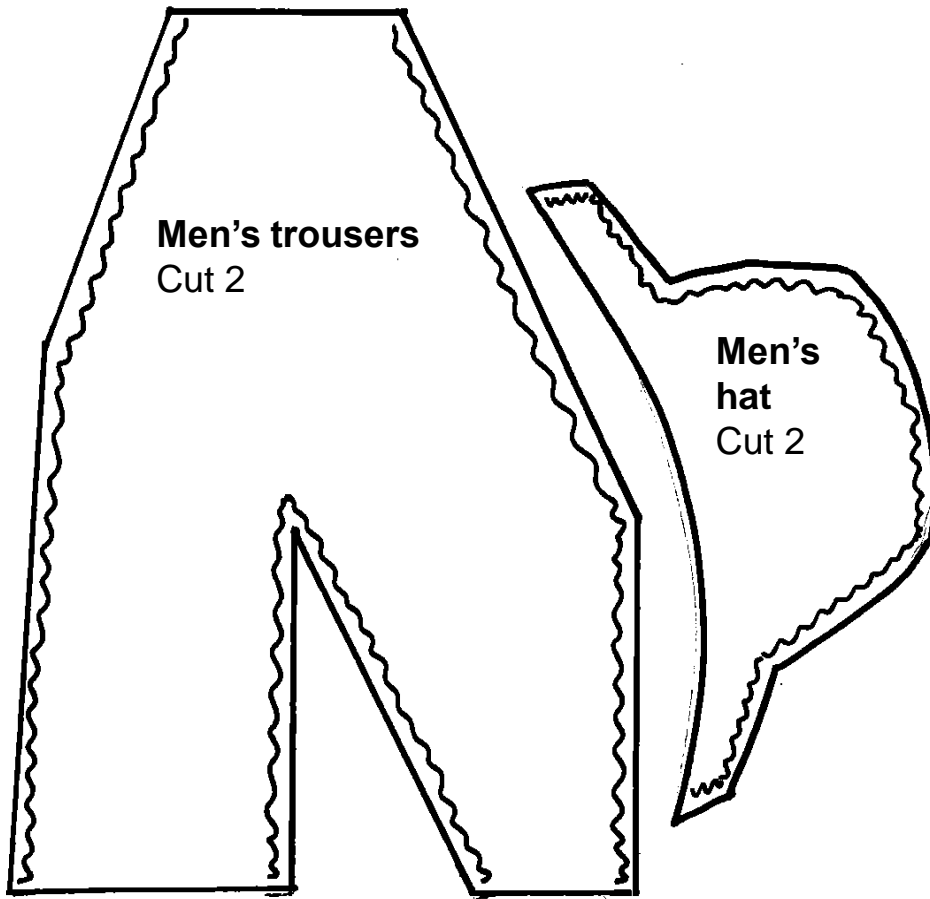
## Workhouse Spoon Doll

**Key:**

Solid line= cut

Dotted line= fold

Wiggly line= glue/sew



**Men's trousers**  
Cut 2

**Men's hat**  
Cut 2

**Adult Male Inmate:**

1x wooden spoon

1x pipe cleaner

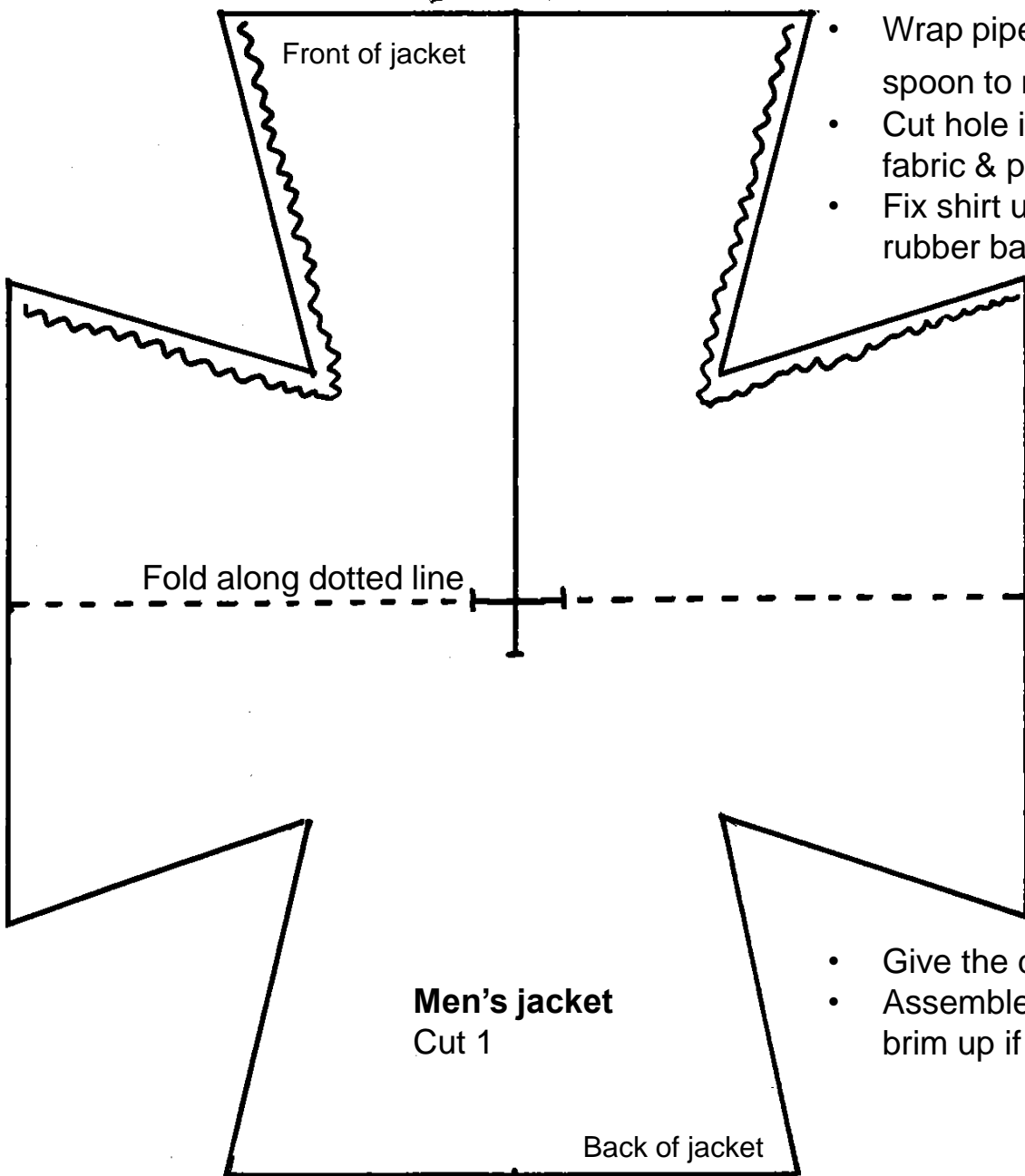
2x rubber bands

Wool for hair

2x buttons

1x piece shirt fabric (10x10cm)

1x fabric for jacket, trousers & hat



Front of jacket

Fold along dotted line

**Men's jacket**  
Cut 1

Back of jacket

- Wrap pipe cleaner around spoon to make arms.
- Cut hole in centre of shirt fabric & push head through.
- Fix shirt under arms with rubber band around the spoon.
- Glue/sew edges of trousers, leaving waist and ankles open.
- Put the spoon handle down the straight trouser leg.
- Tuck shirt into trousers and fix with rubber band.
- Assemble the jacket- glue/sew it AFTER it is on the doll!
- Give the doll a face and hair.
- Assemble the hat, turning the brim up if necessary.

# Workhouse Spoon Doll



**GRESSENHALL**  
FARM AND WORKHOUSE  
MUSEUM OF NORFOLK LIFE

## Key:

Solid line= cut

Dotted line= fold

Wiggly line= glue/sew

## Adult Female Inmate:

1x wooden spoon

1x pipe cleaner

1x rubber band

Wool for hair

1x ribbon 35cm

1x dress fabric (23x34cm)

1x fabric for shawl

1x fabric for apron & bonnet

- Wrap pipe cleaner around spoon to make arms.
- Cut hole in centre of dress fabric & push head through.
- Gather dress under arms with rubber band around the spoon.
- OPTIONAL- sew or glue the sides of the dress together.
- Glue the centre of the ribbon to the top edge of the apron.
- Tie the apron around the doll's waist to hide the rubber band.
- Give the doll a face and hair.
- Assemble the bonnet: Glue long edge 'a' around the top of the spoon to frame the face.
- Fold in the back of the bonnet and glue into place.
- Glue the shawl around the doll's shoulders.

Shawl  
Cut 1

Apron  
Cut 1  
from plain fabric

Bonnet  
Cut 1  
from plain fabric

Edge A