



Visual Story for visiting Gressenhall Farm and Workhouse



Gressenhall Farm and Workhouse is open until 5pm. The café closes at 4:30. You are welcome to bring your own food. We have picnic areas inside and outside. The playground closes at 4:45.

We are not expecting any fire alarms, but if you hear an alarm please follow fire exit signs, staff directions and gather in the courtyard.

You are welcome to bring anything that will make you more comfortable such as assistance dogs, buggies, assistance chairs, ear defenders or toys.

Contents

2-3 How to find the shop and buy your tickets

4 Visiting the museum

5-6 What do in the museum

7 Visiting the playground and café

8 Visiting the farm

9 Plan of toilets and hand dryers

10 Plan of statues and mannequins on site.



Entrance to Car Park.



Car Park.



This is the welcome area. There are toilets in here. Go in here and out the other side through another door.



Continue up the path following the main entrance sign.



This is the door to the shop. The doors slide open when you walk in front of them.



This is the shop where you get your tickets.

You will be given a sticker to wear.

You can pick up a map and trails here too.



Staff wear green t-shirts like this one.

Look out for them if you need any assistance.



This is the view of the courtyard when you leave the shop.

You have a choice of where to go next. You could explore the museum, the farm, go to the café or playground.



Museum

There are displays to explore in the big workhouse building and in the smaller buildings.



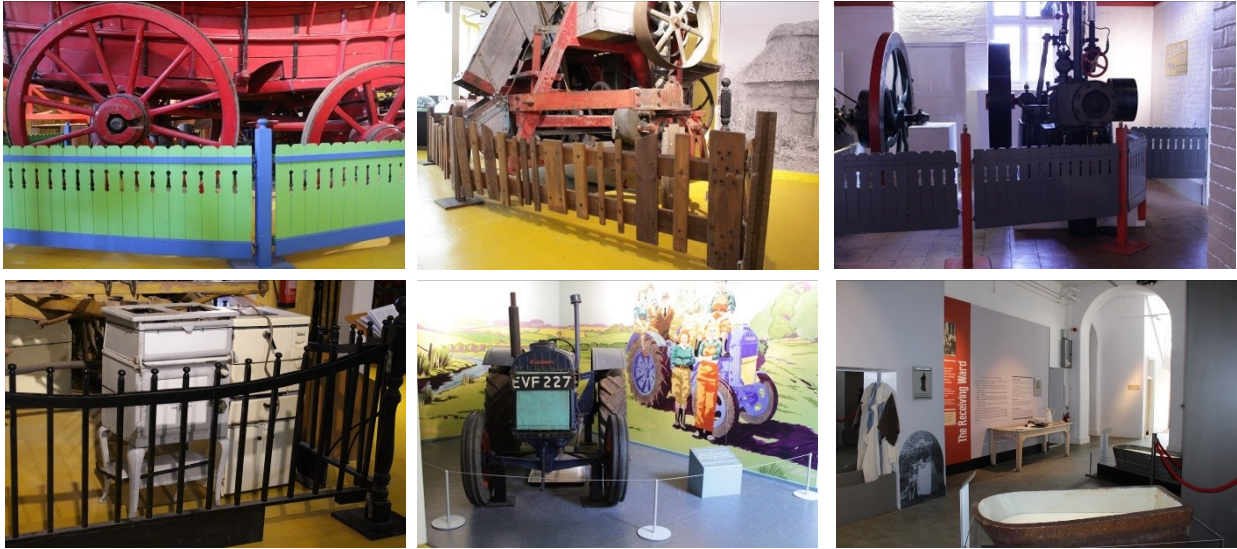
In the workhouse galleries there are projections of people which may come on suddenly when you enter the room.



In some galleries there are videos with sounds playing.



What to do in the museum



Do not go past, over or under these barriers



Touch or Play

There are different smells in these boxes.
You can sniff them if you want to.



Lights

It is quite dark in the museum to protect the objects. Lights may come on suddenly when you enter a room. Some of the rooms may be darker than others.



Uneven floor and steps

Sometimes the floor can be uneven or have steps. There is a glass floor in the gallery which is safe to walk on.



Quiet Space

If you need somewhere quiet you can use our first aid room (map on page 9) as a quiet space, or go outside.





Playground

There are two entrances to the playground.



Café

The café can sometimes be a noisy and smelly place. There are tables inside and benches outside which you can sit at.





Farm

Be careful when you cross the road to the farm.

The farm can sometimes be a noisy and smelly place.



Approach the farm animals quietly and gently. Do not touch the animals - some may bite.



There are displays to explore inside the buildings.

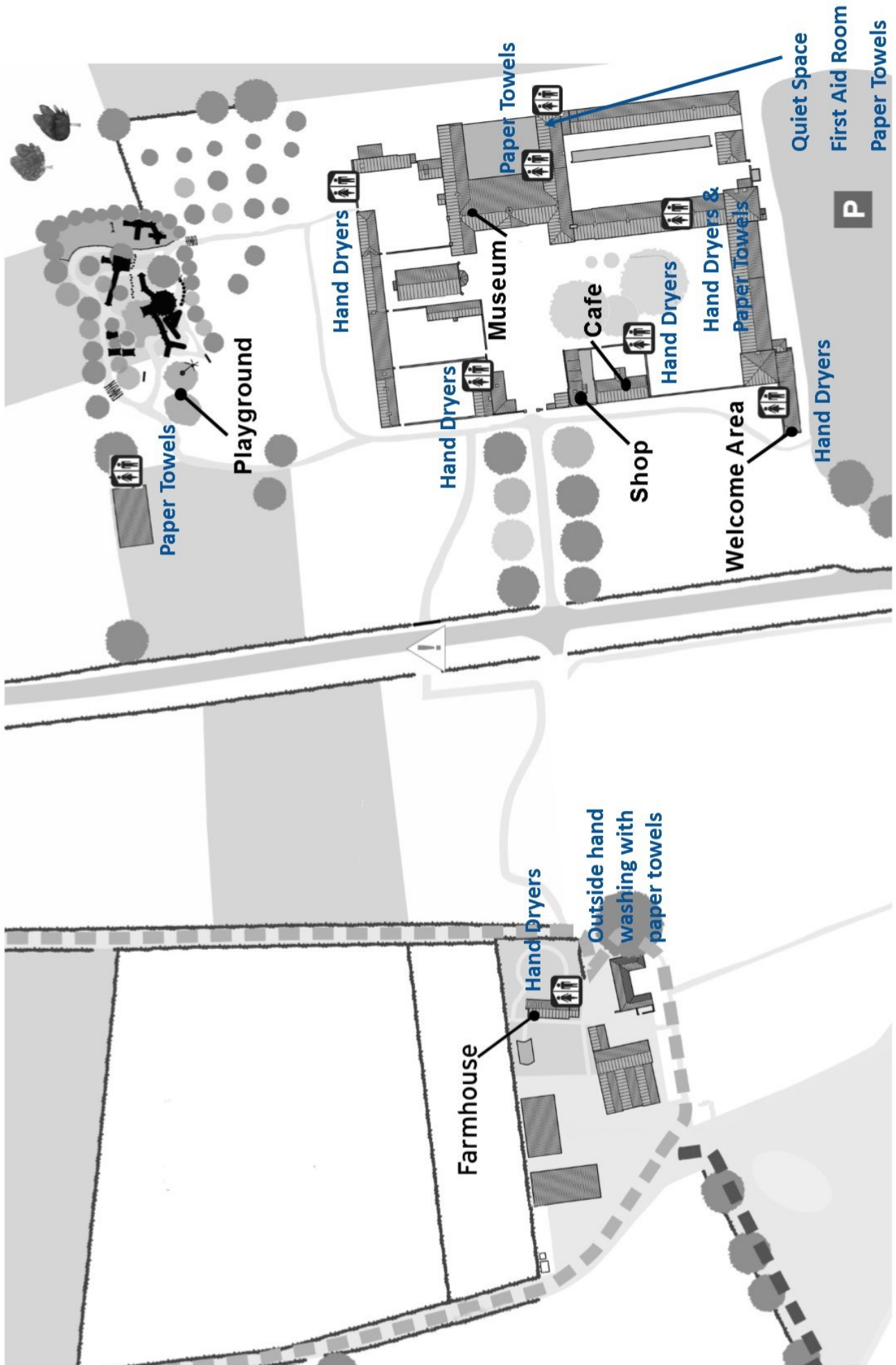
If you walk near the river, be careful of the deep water.



Please do not eat when visiting the farm.

There are lots of places to wash your hands.

Plan of toilets, hand dryers and quiet space



Plan of statues and mannequins

The central floor plan, labeled "First Floor", shows the layout of the museum. It includes a "Museum" section, a "Cafe", and a "rea" (likely a reading area). Several black arrows originate from the plan and point to various photographs of statues and mannequins:

- Top left: A photograph of a mannequin in a historical uniform standing in a museum room.
- Top right: A photograph of a group of bronze statues in an outdoor courtyard in front of a brick building.
- Middle left: A photograph of a mannequin in a historical uniform standing in a museum room.
- Middle right: A photograph of a mannequin in a historical uniform sitting on a yellow platform.
- Bottom left: A photograph of a silhouette of a woman and a child.
- Bottom center: A photograph of a bronze statue of a man sitting on a bench.
- Bottom left (small): A photograph of a silhouette of a man in a historical uniform.
- Bottom center (small): A photograph of a bronze statue of a woman carrying a basket.
- Bottom right (small): A photograph of a mannequin in a historical uniform in a glass display case.